

info HYSTEM-EXTRAN is a Windows-based software package for hydrodynamic rainfall-runoff simulation in urban areas with sophisticated data management in a database. The program uses state-of-the-art algorithms and allows to exactly calculate rainfall-runoff processes and their local and temporal aspects on the surface and within a sewer system.

The definition and modification of the data is designed to be object-oriented, i.e. that for each type of object (manholes, pipes, sets of parameters, rainfall data, etc.) a different input dialog is available. For the administration of the data, an MS Access database is used.

The software package includes the following core calculation programs:

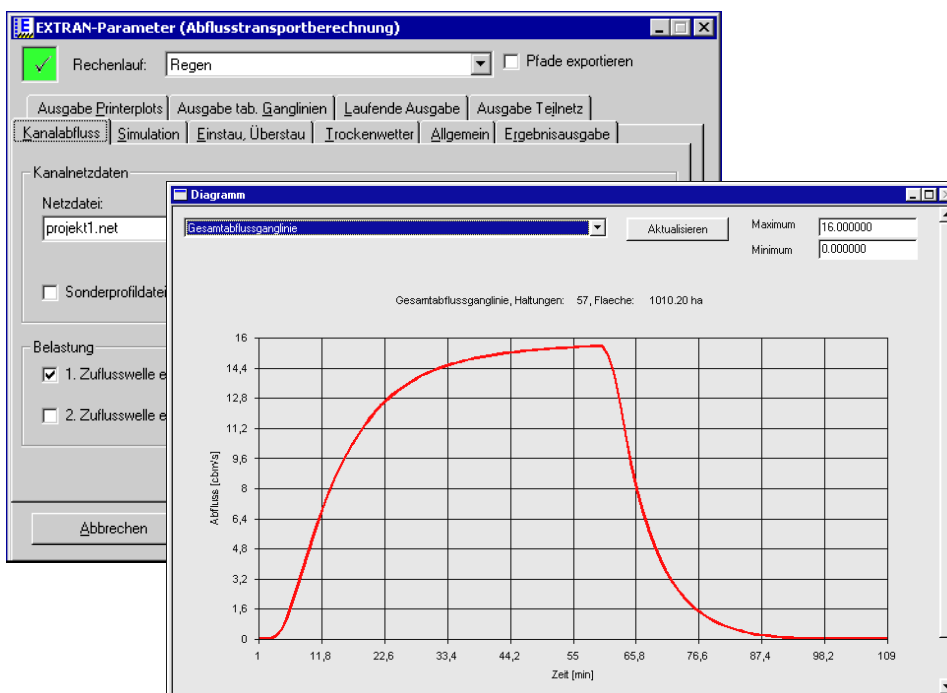
- ◆ ZEBEV (rational method according to ATV A 118)
- ◆ EXTRAN (hydrodynamic sewer simulation)
- ◆ HYSTEM (surface-runoff simulation).

The output of each simulation run comprises extensive print output containing a protocol of the input data, a summary of inflow and outflow volume, and all relevant simulation results. The results in the files can be analyzed by means of the MS-Office applications or graphical modules like itwh GIPS.

In combination with the two itwh applications FLUTER and CONTROL, HYSTEM-EXTRAN can be used for rainfall-runoff simulations in rural areas, and for the development and testing of control strategies for sewer systems.

System requirements

- ◆ Windows XP Professional, Windows 2000 Professional
- ◆ Intel Pentium III-compatible processor



- Defining simulation parameters
- Runoff hydrograph

For further information and/or a quotation, please contact:

itwh - Institut für
technisch-wissenschaftliche
Hydrologie GmbH

Engelbosteler Damm 22
D-30167 Hannover
Phone +49 (511) 97193-0
Fax +49 (511) 97193-77
E-Mail: itwh@itwh.de
Internet: www.itwh.de